

$K_m =$

9. Which of these enzyme substrate reactions has a better  $K_m$ , why?

$[S]_1$

$\downarrow K_m$  better binding. at  $\frac{V_{max}}{2}$   $K_m$  is the lowest it took less time. at high conc. of  $[S_4]$ .

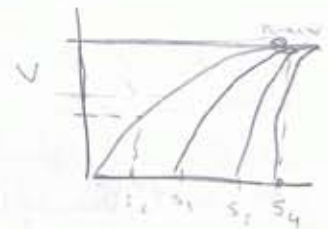
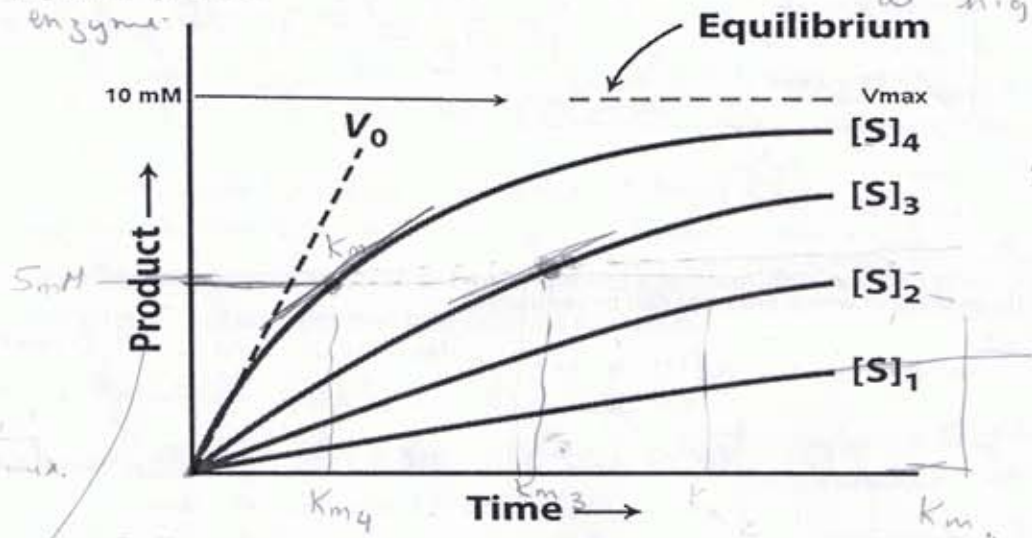


Figure 6.2  
Biochemistry: A Short Course, First Edition  
© 2000 W. H. Freeman and Company

Down  $\Delta$  product /  $\Delta$  time

10. What does it mean to say that  $[ES]$  stays the same?

formation of  $[ES]$  equals the breakdown of  $[ES]$